

Safe
Respectful
Responsible



Wollondilly Newsletter

WOLLONDILLY
PUBLIC SCHOOL

Term 1, Week 10 2021



In This Issue

Principal's Report	1 -2	Book Fair	13
Thank you	2 - 4	Kindergarten Literacy	14
Congratulations	5	Home Reading	15
Learning in KJ	6 - 9	PSSA	17
Learning in KF	10 -11	Calendar	18
Learning in 5/6M	12	Parking	19



School Attendance

The bell to signal the start of learning time goes at 9.25am. **All students are expected to be in class, ready to learn at 9.25am.**

The bell to signal the end of learning time goes at 3.25pm. **All students are expected to stay at school until 3.25pm.**

Please make any appointments outside of these important learning hours.

Breakfast Club

From Monday 22nd March, our breakfast club will start at 8.55am for those students who need breakfast. Unless your child catches an early bus, NO student should be at school before 8.55am. Students who catch the early bus of a morning need to sit quietly in the BER cola until the teacher comes on duty.

Big Fat Smile Before and After School Care is available for parents who need to work outside of school hours. Please contact them directly on 1300 001 237 to book your child in.

Dance2bfit classes – Term 2

We are having the Dance2bfit Program at our school in Term 2 2021 at a cost of \$45 per student for the term. All students will be attending a session each week during class time. Permission notes for this program will be sent home next week.

Contacting your child's teacher

Parents who need to approach the school to:

- discuss the progress or welfare of their child
- express concerns about actions of another child or children

Are required to make an appointment to see your child's teacher. Please call the school office, they will take your name and number and call you back with a time for your appointment. Please provide the admin staff with your child's name, class and brief details of your concerns.

Trying to talk to teachers when they are trying to teach, manage children or engage in another conversation is inappropriate.

If, after speaking with your child's teacher, you need to address an issue further, please contact the school office to make an appointment with the Assistant Principal responsible for your child's stage level.

The Principal is available for meetings after you have spoken with the class teacher and stage AP and still have further enquiries/issues.

Anyone Entering the School Grounds is expected to:

- Enter via the Front Gate and proceed to the school office. All visitors to the school must sign in and out via the Lobbytrac machine in the office and wear the label that is printed out. All visitors to the school must also sign in and out using the QR code in the office.
- Follow school procedures governing entry and behaviour on school grounds, including any restrictions that may be imposed.
- Treat all persons associated with the school with respect and courtesy.
- Keep clear of all buildings and entrances except those relevant to your being at school.
- Allow staff to supervise, investigate and manage students without interference.
- Leave the grounds when requested.

Thank you to our amazing community!

We now have an AED (defibrillator) at WPS! The defibrillator is located in the office foyer and is easily accessible in case of emergency.

A massive thank you to our P&C and the families who donated towards the purchase.

We are so lucky to have a fantastic, supportive community at WPS.



Thank You

Last week we received a very generous donation of a freezer from Aviagen, a worldwide market leader in poultry breeding. The freezer will be used to store bread for breakfast club and our cheese sandwiches from our partnership with the Eat Up program. Thank you Aviagen, we so appreciate you supporting our Wollondilly community.



Thank You



Last week, PineGro, very generously organised by Wollondilly parent Kelly Walker, donated 1 tonne of soil to go towards the garden beds we are creating on the playground. We are so grateful for this donation and are so thankful for the wonderful school community we have at Wollondilly. Thanks for your support.



Congratulations!

Congratulations to our students in 3/4T and 2-6C who were awarded first place in their respective categories for their class entries in the Goulburn Show.

The students spent a lot of time working on these individual pieces under the creative guidance of Miss Tilley, Mrs Carter and Mrs Carmichael.

Well done, everyone!



3/4T



2-6C

Learning in KJ



In KJ this term we have been looking at Living Things for our Science Unit. We have grown Grass Hair Caterpillars and beans on our windows.





We have been investigating a range of materials and classifying them into Living and Non-Living.





In Technology we have been exploring with BeeBots and Dash robots. They are extremely fun!



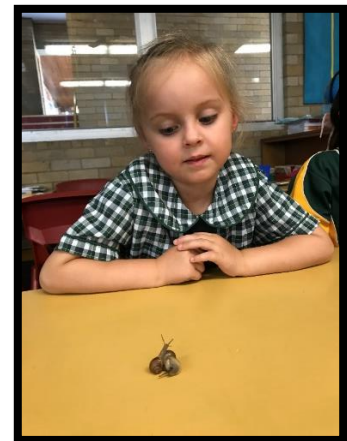


We have begun to code with our Beebots by creating mazes using blocks and lego.



Learning in KF

As part of our Science unit "Living Things" students in KF have been exploring the characteristics of living things. We have been investigating garden worms and snails and watching caterpillars grow. We have been germinating pea seeds, growing hairy grass caterpillars and we were lucky to get a visit from two baby ducklings!





Learning in 5/6M

Year six were lucky enough to go on an excursion week 9 to the Halogen Young Leaders Day. It was held at the Sydney Convention Centre where we listened to some amazing guest speakers. The guest speakers were Lachie Smart (the youngest Australian to fly solo around the world), Anastasia Woolmer (Australian Memory Champion), Jimmy Rees, and David Campbell. It was a great day had by all, and we all learnt a lot.

A small note from some of the year 6 students:

When we went to Young Leaders Day, we had some special people there too. They spoke to us about what they had been through in life and what they achieved. I took home some really good points like don't let anyone stop your dreams and anyone who works hard will succeed.

Brock Thomas

My favourite speaker was Lachie Smart because he taught you to never give up and there is always something left in the tank.

Heidi Besant



Term 2 Book Fair

Our first Book Fair for the year will be held in the school library in Week 2 of Term 2, Tuesday 27th April to Friday 30th April. It will be open before school at 8:55am-9:20am and during lunch. Students can pay with cash or parents can pay online at <https://parentpayments.scholastic.com.au/BookFairs> If ordering online, students will need to bring the payment receipt slip to the library to select their books.

All purchases raise funds for our school library.

Thank you for your support.

Nicole Harker
Teacher Librarian



Kindergarten Literacy

Our school has recently been successful in receiving a very generous grant through the Morpheous Foundation, to fund the InitialLit Literacy program in Kindergarten. This week, our Kindergarten teachers have completed their training in InitialLit and are ready to commence implementation in Term 2.

InitialLit is an evidence based, systematic, whole class literacy program for teaching reading and writing. Systematic teaching programs, such as InitialLit, follow a logical sequence, ensuring that there are no gaps in the delivery of curriculum content. The program is designed to provide children with the foundation skills to become proficient readers and writers, thus reducing the need for literacy intervention in the later years of primary school.

InitialLit incorporates a synthetic phonics approach to teaching spelling and reading, with a focus on rich literary texts and the development of students' vocabulary. Synthetic phonics programs have been identified as the most successful approach to teaching reading and spelling.

Parents and Carers of our Kindergarten students will be invited to an InitialLit parent information session in Week 4, Term 2 (date to be advised). This will give parents/carers an opportunity to discover how best to supporting their child's reading development at home.

Michelle Davy
Instructional Leader



Home Reading

Practice in reading aloud is very important for Literacy development and we encourage all students to read for at least 10 minutes a day to an adult or older sibling. The following article on the 'Pause, Prompt, Praise' method is a very effective strategy in helping a **beginning reader** to read difficult words.

Home Reading PAUSE PROMPT PRAISE



www.fivefromfive.org.au



www.cis.org.au

Practice in reading aloud is very important for literacy development. Reading with a parent or carer is a great opportunity to do this, but parents often do not get good advice about how to help their child. The Pause, Prompt, Praise method is research-based and effective. When your child is a Beginning Reader and has difficulty with a word the following has been shown to be the best way to help them:

1. **PAUSE** for around 3-5 seconds—this is important because children can often self-correct if given the time. They read more slowly than we do and need the time to work it out. If we jump in too quickly, not only do we make them reliant on us to help them, but we undermine their self-confidence.
2. **PROMPT**—if the child cannot self-correct, we can offer them a phonic prompt.
 - a. The first prompt should be a phonic prompt. "What's the first sound in that word?"
 - b. If they still can't get it, sound the word for them with a slight pause between each sound e.g: f...r...o...g. Encourage your child to sound out and then blend all through the word.
 - c. You could also identify the first sound and encourage them to sound out the rest or break the word into its syllables. It may be useful to cover the word and reveal it slowly, looking at the sounds or the sections of the word.
 - d. If they still have difficulty, tell them the word—and move on.
3. **PRAISE** is an important part of reading and you should give specific praise when they have corrected an error or read the word correctly after a prompt. Praise should be specific, e.g: "You figured that out by yourself" or "You worked that out with only a little bit of help."

For **Older Students** who might misread a word and continue, wait until they get to the end of the sentence before stopping them. Sometimes the reader will realise their mistake because it doesn't make sense—and then self-correct—but they often need to get to the end of the sentence to realise this. We want readers to be able to read for meaning, and it's an important skill for them to develop. If we immediately stop and correct them again we undermine the development of this process.

1. If they read on into the next sentence you may then want to ask them: "did that make sense?"
2. If they think it made sense, then ask them to read the sentence again. Sometimes they get it correct because they read more carefully this time.
3. If they have misread a word for the second time, go back to the word and ask them to have a close look at it. If they recognise their mistake, read the sentence again with the correct word.
4. If they cannot read the word, help them to break it up using the strategies above.
5. If they still have trouble, provide the word and move on—but make a note of the word and have a look at it later on. Talk about the meaning of the word, perhaps it's a new word for them, there's an unfamiliar part of the word, or they don't know how to pronounce it.

Aboriginal and Torres Strait Islander Student Group

Wollondilly Public School is establishing an Aboriginal and Torres Strait Islander Student group and would like to offer all Aboriginal and Torres Strait Islander students the opportunity to participate in activities throughout the year.

Our first activity for the year will be an informal gathering with parents on Monday 3 May from 2-3pm. If you are interested in finding out more about this group or would like your child to participate in activities throughout the year, please complete and return the attached note to the school office.

Please complete and return to the office-----

Aboriginal and Torres Strait Islander Student Group

Student's Name: _____ Class: _____

I would like my child to participate in the Aboriginal and Torres Strait Islander Student Group activities

I would like more information about the Parent gathering on date in May

Parent's Name: _____ Phone: _____

PSSA

Stage three have had a busy term with lots of students attending PSSA trials for the chance to be selected in the Tablelands and South Coast sporting teams. These trials are ongoing and we look forward to updating you on our student achievements as we receive the results.

Congratulations to all of our students who have participated in these trials and a special mention to the following students who have made it on to the next stage of trials.

Ella Upton	Isaac Jones
Storm Mouton	Josh Mouton
Elsie Harmer	Hannah Brettell
Imogen Cooper	Ben Walker
Malachi Sanderson	Thomas Cole
Hudson McClelland	Harrison Sully
Lilly Sexton	Hunter Smith

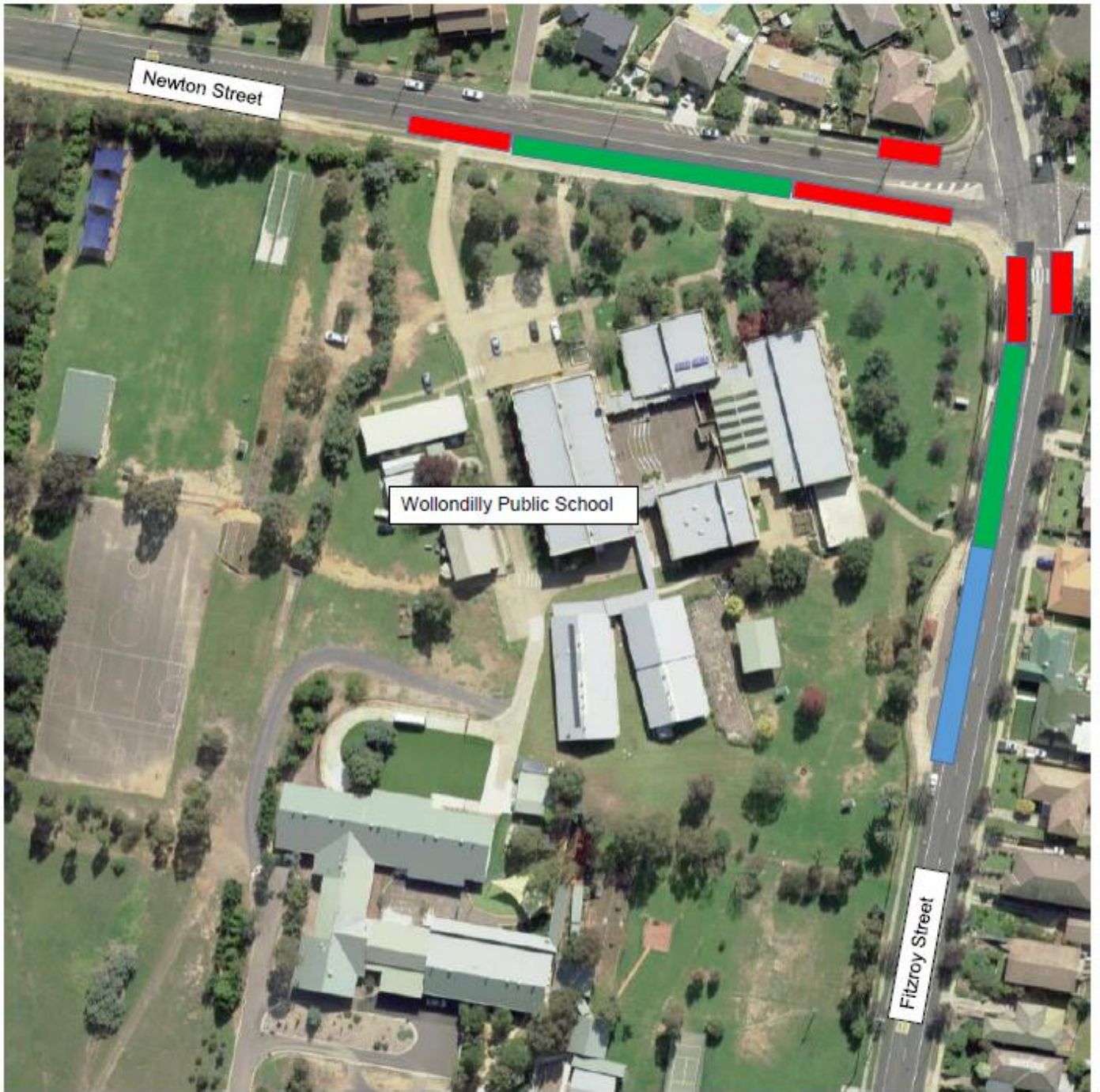
Wollondilly turns 50!

It's officially our 50th birthday!

To keep up-to-date with our plans to celebrate this milestone and to take a walk down memory lane, please join our Facebook group – **Wollondilly Public School 50th Anniversary 2021**.

If you would like to be a part of our 50th Anniversary organising committee, please email your interest to wollondill-p.school@det.nsw.edu.au

	Dates for your Diary
2021	TERM 1
Week 9 Monday 22 March	SCHOOL PHOTO DAY, all students are asked to wear full summer uniform. Photo ordering envelopes must be returned to the photographer, on the day of photos.
Week 9 Thursday 25 March	YEAR 6 YOUNG LEADER'S EXCURSION
Week 10 Thursday 1 April	EASTER HAT PARADE – More details to follow. Last day of Term 1. Students return to school on Tuesday 20 April 2021 for the commencement of Term 2.
	TERM 2
Week 1 Tuesday 20 April	Students return to school for the commencement of Term 2.
Week 2 Tuesday 27 April to Friday 30 April	BOOK FAIR IN THE LIBRARY. More details to follow.
Week 2 Tuesday 28 April	WOLLONDILLY CROSS COUNTRY. This is an all school event held in the grounds of the school. More information will be sent home closer to the date.
Week 3 Wednesday 5 May	P & C Meeting commences at 7pm in the School Library. All parents and carers are most welcome to attend.
Week 3 Friday 7 May	DISTRICT CROSS COUNTRY.
Week 7 Wednesday 2 June	P & C Meeting commences at 7pm in the School Library. All parents and carers are most welcome to attend.
Week 9 Monday 14 June	QUEEN'S BIRTHDAY PUBLIC HOLIDAY.
Week 10 Friday 25 June	Last day of Term 2. Students return to school on Tuesday 13 July 2021 for the commencement of Term 3.



No Parking

You may stop here for no more than 2 minutes, when picking up and dropping off passengers and stay within 3 metres of your vehicle. Otherwise no stopping is permitted.



Bus Zone

You are not allowed to stop your vehicle unless you are driving a bus.



No Stopping/Standing

Under no circumstances are you allowed to stop here. (Unless there is a medical or other emergency)

SCHOOL ZONE PARKING OFFENCES



NO STOPPING

Under no circumstances are you allowed to stop here. (Unless there is a medical or other emergency)

Maximum Penalty

\$349

+ 2 Demerit points



NO PARKING

You may stop here for no more than 2 minutes, when picking up or dropping off passengers and stay within 3 metres of your vehicle. Otherwise no stopping is permitted.

Maximum Penalty

\$194

+ 2 Demerit points



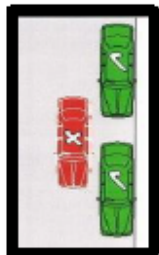
BUS ZONE

You are not allowed to stop your vehicle unless you are driving a bus

Maximum Penalty

\$349

+ 2 Demerit points



DOUBLE PARKING

You are not permitted to stop or park your vehicle alongside another vehicle that is already parked parallel to the kerb.

Maximum Penalty

\$349

+ 2 Demerit points

For a full list of all penalties and offences, please visit www.transport.nsw.gov.au
Fines subject to change without notice. These penalties apply to offences in school zones only while the zone is active.



**KEEPING OUR
CHILDREN
SAFE**



SCHOOL ZONE TRAFFIC OFFENCES



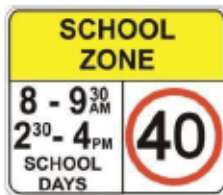
CHILDREN CROSSING

When flags are displayed, drivers must not proceed through the **crossing** if children or adults are still on the **crossing** or about to start **crossing**. This is the law regardless of the presence of a **crossing** supervisor. When children's **crossings** flags are not displayed, pedestrians should give way to passing road traffic.

Penalty

\$581

+ 4 Demerit points



SPEEDING OFFENCES

School Zone speeding offences attract higher fines & demerit points than other speeding offences.

Maximum Penalty

\$2,676

+ 7 Demerit points



MOBILE PHONE USE

Driving using a hand held phone in a school zone.

Penalty

\$464

+ 5 Demerit

For a full list of all penalties and offences, please visit www.transport.nsw.gov.au
Fines subject to change without notice. These penalties apply to offences in school zones only while the zone is active.



**KEEPING OUR
CHILDREN
SAFE**



GOULBURN SUPPORT GROUP PRESENTS:

Shakin' Cocktail Party

FUNDRAISER FOR LOCAL PARKINSON'S NURSE
6PM FRIDAY 16TH APRIL, 2021



TICKETS ONLY
\$70
INCLUDES DINNER,
2 DRINKS & SHOW

STARRING
JONAS JOST
MAGICIAN - ILLUSIONIST

HUGE RAFFLE, GREAT PRIZES. GOODIES TO BUY!
TICKETS AVAILABLE FROM VENUE: 4821 3355
GOULBURN WORKERS CLUB
COCKTAIL DRESS IS A MUST! INDIVIDUAL OR TABLES OF 4, 6, 10 OR 12.
INFO: GILL & MICK 0418168558



GOULBURN'S PREMIUM ENTERTAINMENT VENUE!

ARCADE GAMES, MINI BOWLING, LASER TAG AND A CAFÉ!

Workers Club Arena

135 Hume Street

Access via 1 Sports Way

Opening Times

Fridays 12pm-10pm

Saturdays 10am-10pm

Sundays 10am-4pm

SCHOOL HOLIDAYS: OUR HOURS ARE EXTENDED OPENING 7 DAYS

Mon to Thurs 10am-4pm

Fri & Sat 10am-10pm

Sun 10am-4pm

PUBLIC HOLIDAYS 10am to 4pm

CLOSED CHRISTMAS DAY & EASTER DAY

Contact us on **02 4822 2688** or backtothearcade2580@gmail.com

SAFE
RESPECTFUL
RESPONSIBLE